

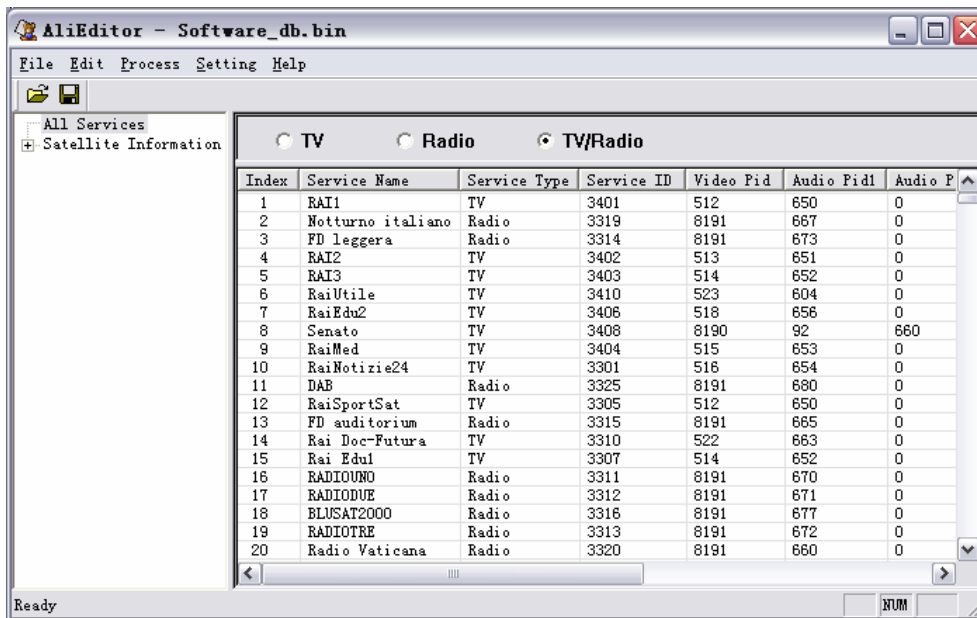
ALiEditor User Manual

1 Introduction

1.1 Summary

ALi Editor is designed for updating the Default Database of STB Flash. It can also update the User Database because user is very troubled to use remote to edit the User Database.

The ALi Editor data source can be from *.abs/*.ddf file. User can create the data source by Manually Edit the ALi Editor or Auto Scan using STB device to get the User Database. User can expediently select the Default Database or User Database to download to STB.



1.2 Files

.bin: The data file uploaded from STB Flash to PC.

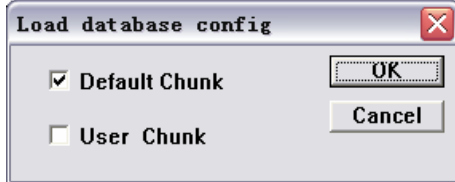
.ddf, .ddf2: The data file only include Default Database. It can be merged with other data using certain tool.

2 Operation

2.1 Open

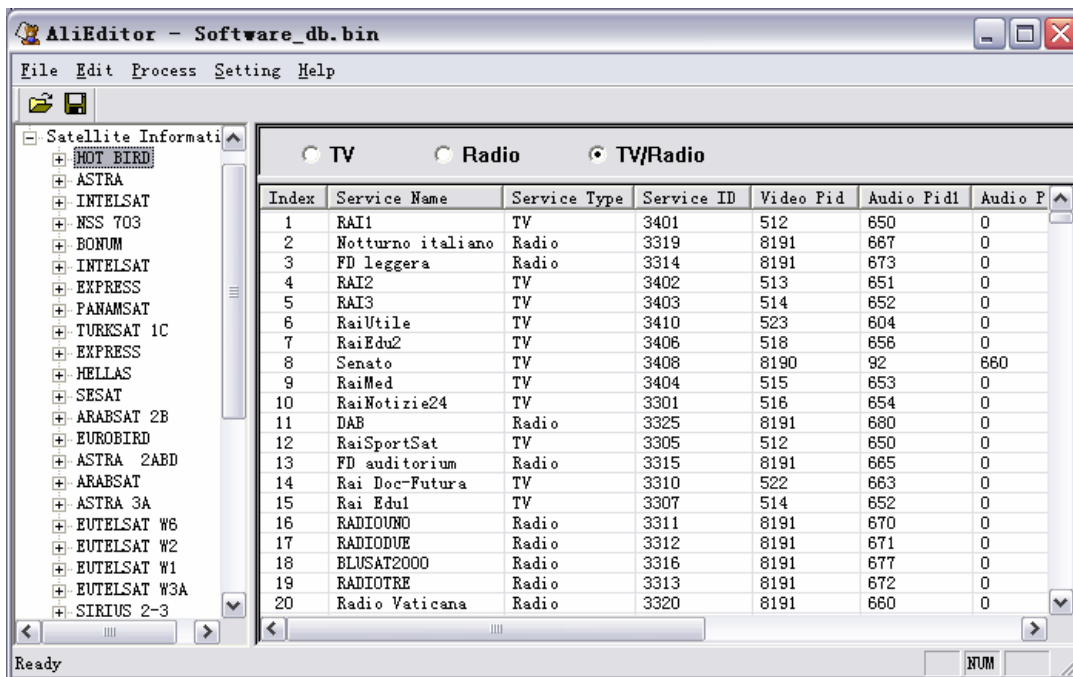
Select the Menu or Tool bar to click the Open item. There are 3 type files can be selected: *.bin, *.ddf, *.df2

When open the *.bin, follow dialog box will appear:



User should select the Default Database or User Database to open.

2.2 Browse



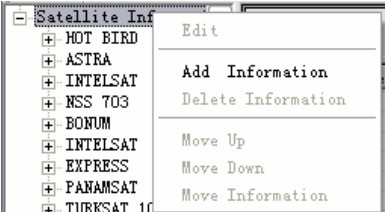
The "Left window" list the Satellite/TP tree. When select one TP, the "Right window" will list the Programs for this TP.

The "Right top window" is the button to filter TV or Radio.

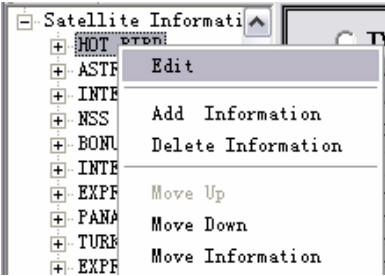
2.3 Edit

2.3.1 Satellite

Add Satellite

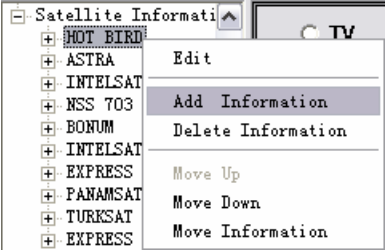


Edit Satellite

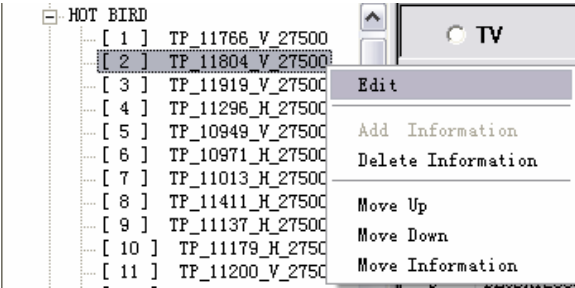


2.3.2 TP

Add TP

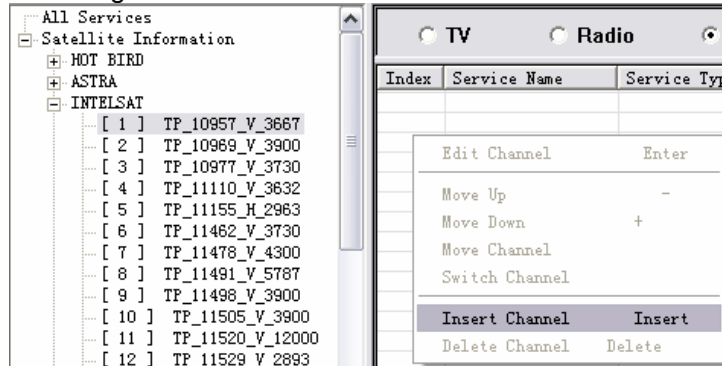


Edit TP

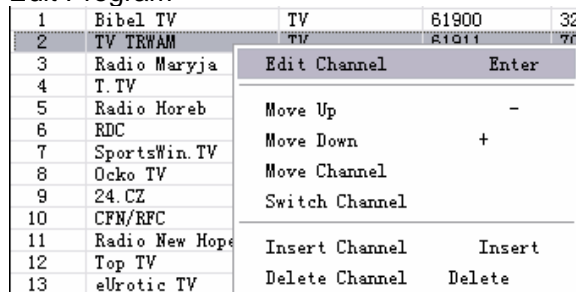


2.3.3 Program

Add Program



Edit Program



Note: Should first select one TP, then user can Insert Channel.

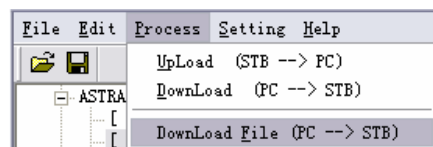
When Insert Channel/Edit Channel, user can make one program to one or more Favorite Groups

2.4 Save

Only *.bin/*.df2 can be saved.

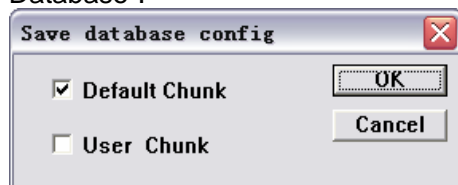
When save *.bin, user need to select saving to default database or user database.

2.5 Download File

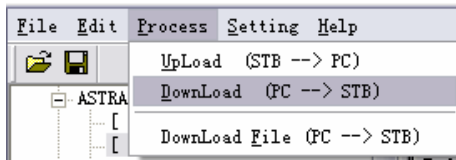


Select the *.bin file, then Download the Database to STB Flash.

Before Download, should select the aim Database which is "Default Database" or "User Database".

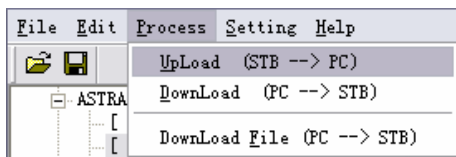


2.6 Download



This is the special case of “Download File”. It just Download the current file to STB Flash. It can't support to select one file on PC to Download.

2.7 Upload



Upload the data from STB Flash to PC:

When click the “Upload (STB → PC)”, a window opened to user to select which file want to be saved. The save type can be *.df2/*.bin, otherwise the save type can be only *.bin

